

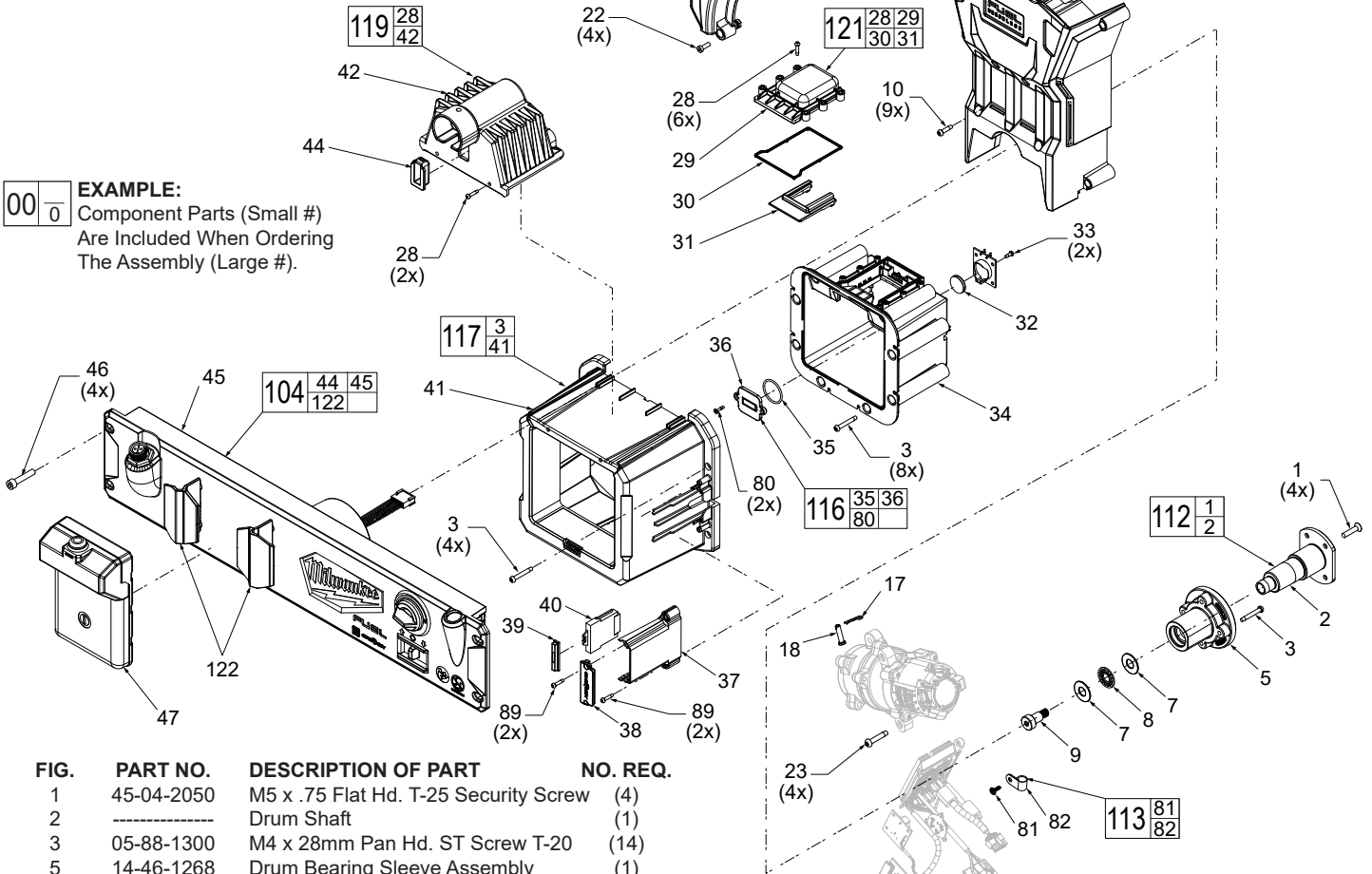


SERVICE PARTS LIST

BULLETIN NO.
54-07-2785

SPECIFY CATALOG NO. AND SERIAL NO. WHEN ORDERING PARTS		REVISED BULLETIN	DATE
M18™ FUEL™ High Speed Chain Snake for 1-1/2" - 4" Pipes			Mar. 2023
CATALOG NO.	2819-20	STARTING SERIAL NO.	N47A
		WIRING INSTRUCTION See Page 4	

SERVICE TABLE OF CONTENTS	
Page 1	UI and Interior Assemblies
Page 2	Drum and Handle Assemblies
Page 3	Gearbox and Motor Assemblies
Page 3	Torque Chart
Page 4	Wiring



EXAMPLE:
Component Parts (Small #)
Are Included When Ordering
The Assembly (Large #).

FIG.	PART NO.	DESCRIPTION OF PART	NO. REQ.
1	45-04-2050	M5 x .75 Flat Hd. T-25 Security Screw	(4)
2	-----	Drum Shaft	(1)
3	05-88-1300	M4 x 28mm Pan Hd. ST Screw T-20	(14)
5	14-46-1268	Drum Bearing Sleeve Assembly	(1)
7	45-88-0214	Lever Washer	(2)
8	02-80-0180	Thrust Needle Bearing	(1)
9	05-74-0044	M8 x 35mm Shoulder Bolt	(1)
10	06-82-4003	M4 x 16mm Pan Hd. ST T-20 Screw	(9)
17	-----	Snap Pin	(1)
18	-----	Cable Connection Pin	(1)
22	05-78-0910	M4 x 12mm Fillister Hd. Screw	(1)
23	-----	M5 x 27.5mm Pan Hd. ST T-25 Screw	(4)
26	22-68-0032	Drive Train Cover	(1)
27	-----	Cable Sheath Cover	(1)
28	06-82-1080	M3 x 14mm Pan Hd. ST T-10 Screw	(8)
29	-----	Terminal Cover	(1)
30	-----	Battery Terminal Gasket	(1)
31	-----	Terminal Support	(1)
32	-----	3V Coin Cell	(1)
33	05-81-1195	M3 x 8mm Pan Hd. ST T-10 Screw	(2)
34	31-50-0027	Battery Housing	(1)
35	-----	O-ring	(1)
36	-----	Coin Cell Cover	(1)
37	22-68-0034	ONE-KEY™ Card Cover	(1)
38	31-12-0033	ONE-KEY™ Card Cover Cap	(1)
39	31-42-0019	Foam Insert	(1)
40	14-20-0291	ONE-KEY™ PCBA Card	(1)
41	-----	Battery Box	(1)
42	-----	Shroud	(1)

FIG.	PART NO.	DESCRIPTION OF PART	NO. REQ.
44	-----	Wire Retainer	(1)
45	-----	UI Housing Assembly	(1)
46	05-74-0026	M6 x 30mm Cap Hd. Hex Socket Screw	(4)
47	14-02-0000	Foot Pedal and Cord Service Assembly	(1)
80	05-80-0433	M2.6 x 12mm Flat Hd. ST Screw	(2)
81	-----	PCB Screw	(1)
82	-----	Wire Clip	(1)
83	-----	Sheath Retainer Support	(1)
84	-----	Sheath Retainer Cover	(1)
88	05-81-0046	M2 x 6mm PWH ST Screw	(1)
89	05-74-0221	M3 x 1.058 PH T10 Screw	(4)
104	14-46-1254	UI Housing Service Assembly	(1)
112	14-46-1269	Drum Shaft Service Kit	(1)
113	14-46-1271	Wire Clip Service Kit	(1)
116	14-46-1272	Coin Cell Cover Service Kit	(1)
117	14-46-1273	Battery Box Service Kit	(1)
118	14-46-1277	Sheath Cover Service Kit	(1)
119	14-46-1274	Shroud Service Kit	(1)
120	14-46-1278	Sheath Retainer Service Kit	(1)
121	14-46-1276	Terminal Service Kit	(1)
122	14-46-1279	Foot Pedal Retainer Service Kit	(1)

MILWAUKEE TOOL • www.milwaukeetool.com
13135 W. LISBON RD., BROOKFIELD, WI 53005
Drwg. 1

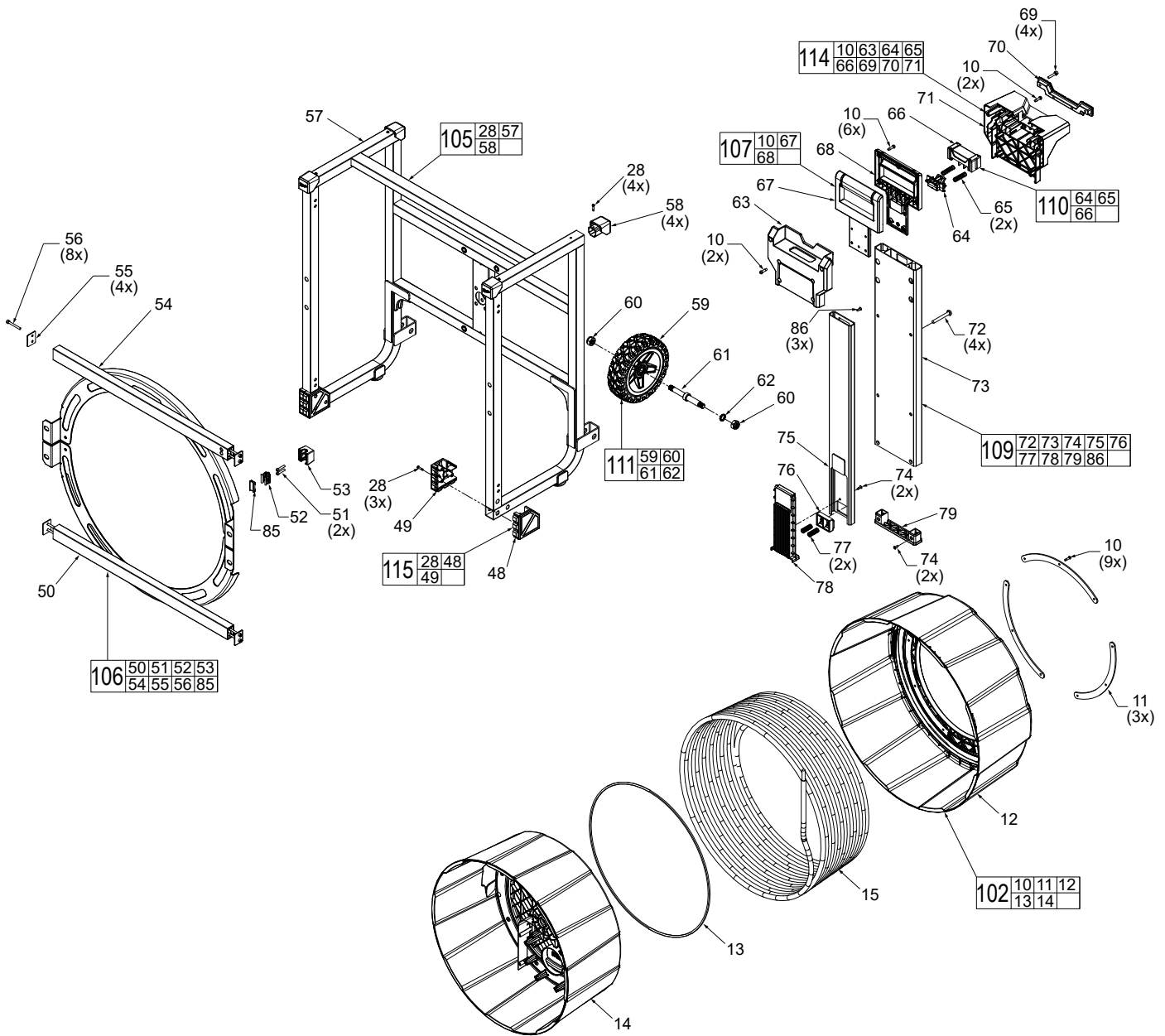
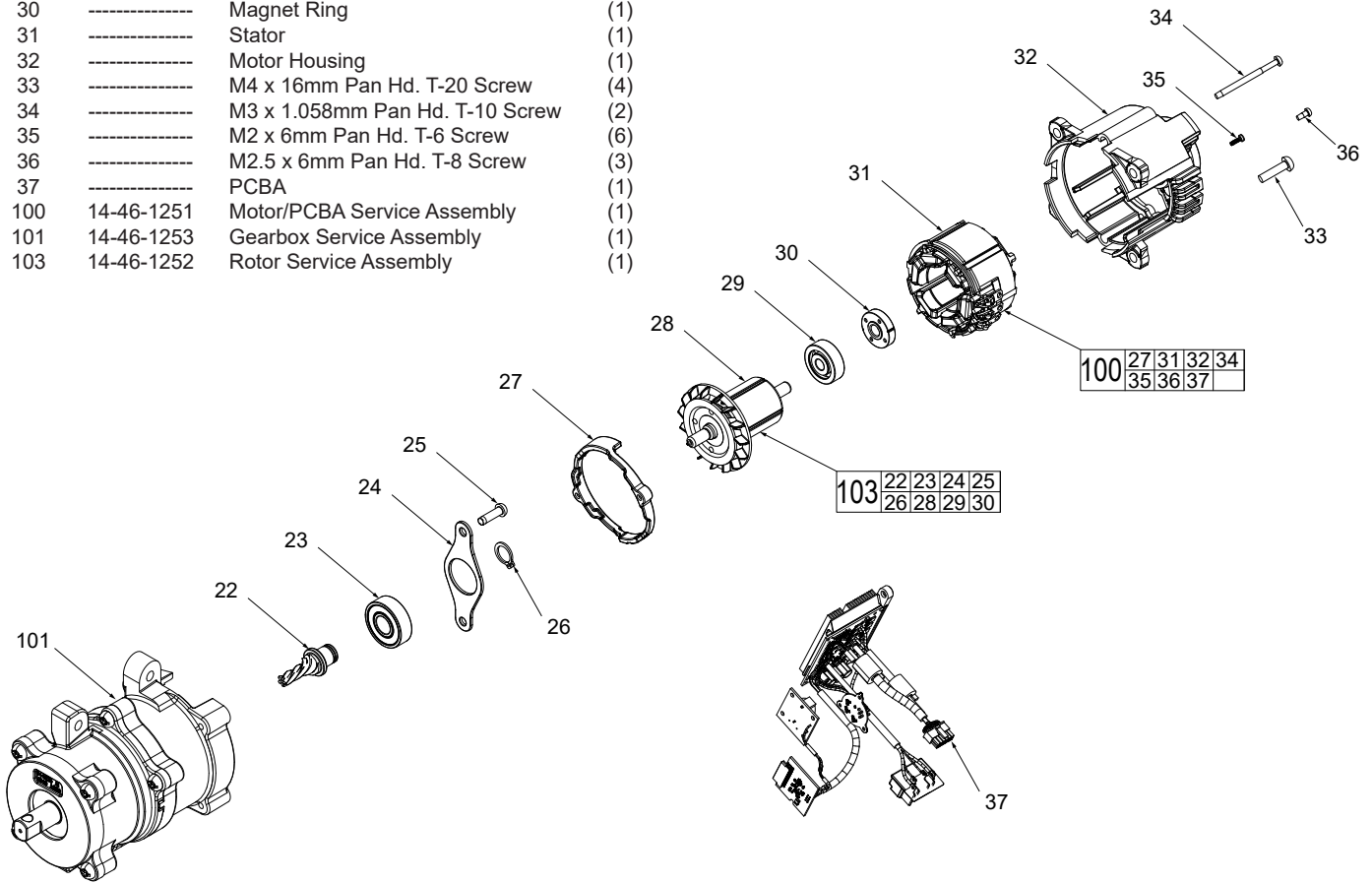


FIG.	PART NO.	DESCRIPTION OF PART	NO. REQ.	FIG.	PART NO.	DESCRIPTION OF PART	NO. REQ.
10	06-82-4003	M4 x 16mm Pan Hd. ST T-20 Screw	(19)	66	-----	Handle Button	(1)
11	-----	Drum Washer	(3)	67	-----	Handle Support	(1)
12	-----	Outer Drum	(1)	68	-----	Handle Cover	(1)
13	-----	Drum Gasket	(1)	69	-----	M4 x 22mm Hex w/Flat Washer Screw	(4)
14	-----	Inner Drum	(1)	70	44-34-0039	Rubber Foot	(1)
15	-----	Flexible Shaft	(1)	71	-----	Handle Housing Support	(1)
28	06-82-1080	M3 x 14mm Pan Hd. ST T-10 Screw	(7)	72	06-82-2801	M6 x 48mm Pan Hd. T-30 Screw	(4)
48	-----	Bottom Foot Support	(2)	73	-----	Handle Extrusion	(1)
49	-----	Bottom Foot Cover	(2)	74	-----	M3 x 10mm Flat Hd. T-10 Screw	(4)
50	-----	Cross Bar	(1)	75	-----	Telescoping Extrusion	(1)
51	05-74-0012	M4 x 20mm Pan Hd. T-20 Screw	(1)	76	-----	Limiter Slider	(1)
52	-----	Cable Clip	(1)	77	-----	Hub Handle Spring	(2)
53	-----	Cable Clip Holder	(1)	78	-----	Telescoping Handle Limiter	(1)
54	-----	Top Horizontal Tube	(1)	79	-----	Cap Extrusion	(1)
55	-----	Frame Washer	(4)	85	-----	Cable Retaining Rubber	(1)
56	05-74-0122	M4 x 35mm Socket Head Cap Screw	(8)	86	05-81-0594	M4 Flat Hd. T-20 Screw	(3)
57	-----	Frame Assembly	(1)	102	14-46-1256	Drum Service Assembly	(1)
58	-----	Frame Cap	(4)	105	14-46-1257	Frame Service Assembly	(1)
59	-----	Wheel	(2)	106	14-46-1258	Cross Bar/Support Cover Service Kit	(1)
60	-----	M10 Lock Nut	(4)	107	14-46-1263	Handle Service Kit	(1)
61	-----	Wheel Shaft	(2)	109	14-46-1261	Telescoping Handle Service Kit	(1)
62	-----	Wheel Shaft Bushing	(2)	110	14-46-1264	Switch/Button Service Kit	(1)
63	-----	Handle Housing Cover	(1)	111	14-46-1266	Wheel Service Kit	(1)
64	-----	Handle Switch	(1)	114	14-46-1262	Handle Cover Service Kit	(1)
65	-----	Upper Handle Spring	(2)	115	14-46-1267	Bottom Foot Service Kit	(1)
				123	12-20-0851	Service Nameplate (not shown)	(1)

FIG.	PART NO.	DESCRIPTION OF PART	NO. REQ.
22	-----	Motor Pinion	(1)
23	-----	Ball Bearing	(1)
24	-----	Bearing Washing	(1)
25	-----	M4 x 14mm Pan Hd. T-20 Screw	(2)
26	-----	Retaining Ring	(1)
27	-----	Fan Baffle	(1)
28	-----	Rotor	(1)
29	-----	Ball Bearing	(1)
30	-----	Magnet Ring	(1)
31	-----	Stator	(1)
32	-----	Motor Housing	(1)
33	-----	M4 x 16mm Pan Hd. T-20 Screw	(4)
34	-----	M3 x 1.058mm Pan Hd. T-10 Screw	(2)
35	-----	M2 x 6mm Pan Hd. T-6 Screw	(6)
36	-----	M2.5 x 6mm Pan Hd. T-8 Screw	(3)
37	-----	PCBA	(1)
100	14-46-1251	Motor/PCBA Service Assembly	(1)
101	14-46-1253	Gearbox Service Assembly	(1)
103	14-46-1252	Rotor Service Assembly	(1)



SCREW TORQUE SPECIFICATIONS			SEAT TORQUE	
FIG.	PART NO.	WHERE USED	(kgf-cm)	(lb-in)
1	45-04-2050	Drum Shaft	16-20	14-17
3	05-88-1300	Bearing Sleeve	20-24	17-21
3	05-88-1300	Battery Housing	13-15	11-13
3	05-88-1300	Battery Box	13-15	11-13
9	05-74-0044	Drum to Drum Shaft	28-32	24-28
10	06-82-4003	Drum Washer	10-12	9-10
10	06-82-4003	Drivetrain Cover	10-12	9-10
10	06-82-4003	Telescoping Handle	16-18	14-16
10	06-82-4003	Handle Housing Cover	16-18	14-16
22	05-78-0910	Cable Sheath Cover	16-20	14-17
23	-----	Gearbox to Drum	18-22	16-19
28	06-82-1080	PCBA/Battery HSG/Box	6-8	5-7
28	06-82-1080	Bottom Foot	5-7	4-6
28	06-82-1080	Frame Cap to Frame	3-5	3-4
33	05-81-1195	Coin Cell to Battery Box	4-6	4-5
46	05-74-0026	UI Housing to Frame	16-18	14-16
51	05-74-0012	Cable Clip to Tube	9-13	8-11
56	05-74-0122	Frame	13-15	11-13
60	-----	Wheel Shaft	45-50	39-43
69	-----	Rubber Foot	13-15	11-13
72	06-82-2801	Telescoping Handle	20-24	17-21
74	-----	Limitter	7-9	6-8
80	05-80-0433	Coin Cell Cover	2-3	2-4
81	-----	Wire Clip	3-5	3-4
86	05-81-0594	Telescoping Extrusion	17-21	15-18
88	05-81-0046	Sheath Retainer Cover	2-3	2-3
89	05-74-0221	ONE-KEY™ Card Cover	7-9	6-8

Route all wires as shown ensuring wires are placed completely down in wire traps. Verify all electrical components are installed firmly and squarely in housing cavities.

